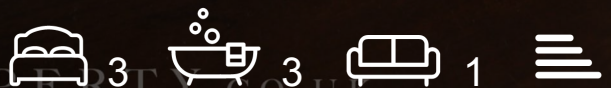
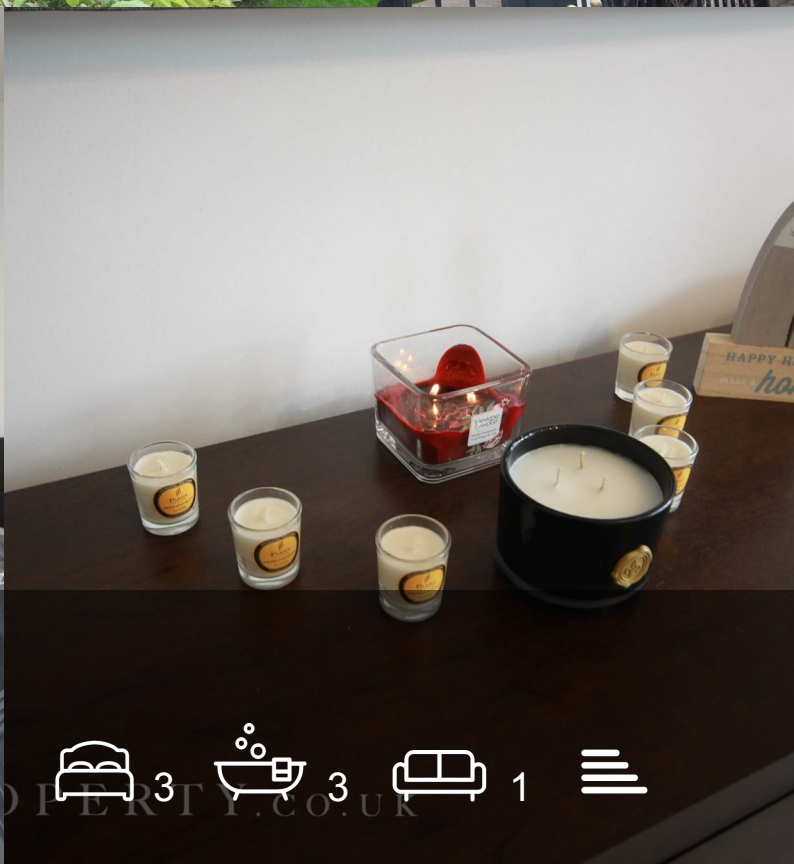




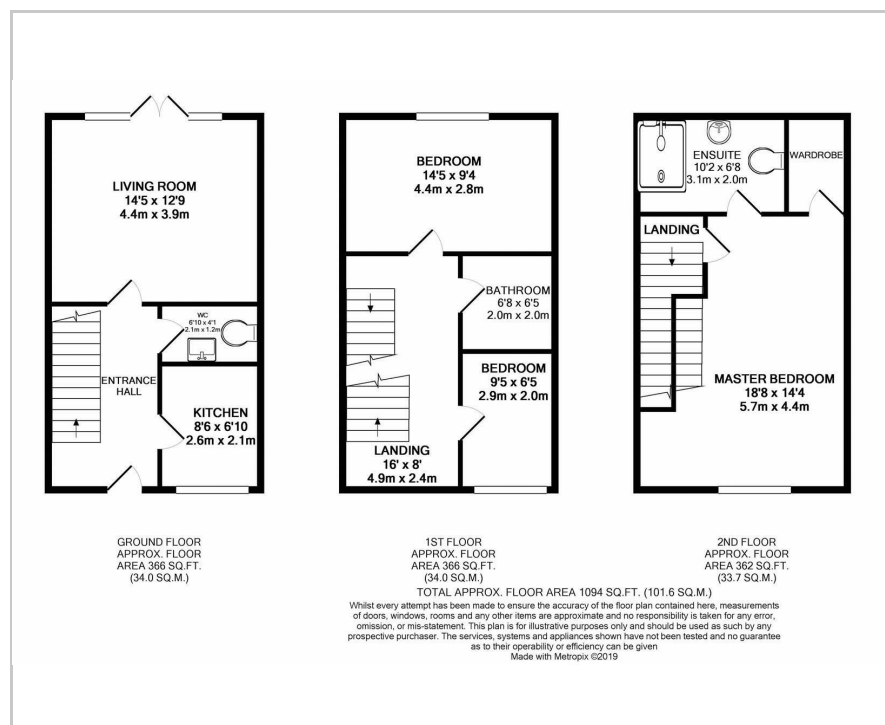
107 Lodge Road

Birmingham, B18 5BN

Offers In Excess Of £185,000



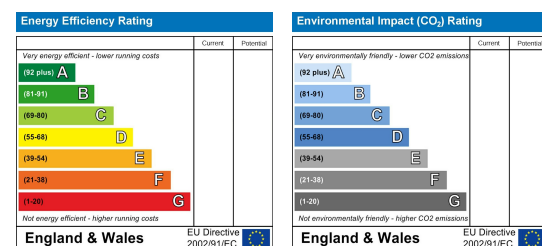
Floor Plan



Area Map



Energy Efficiency Graph

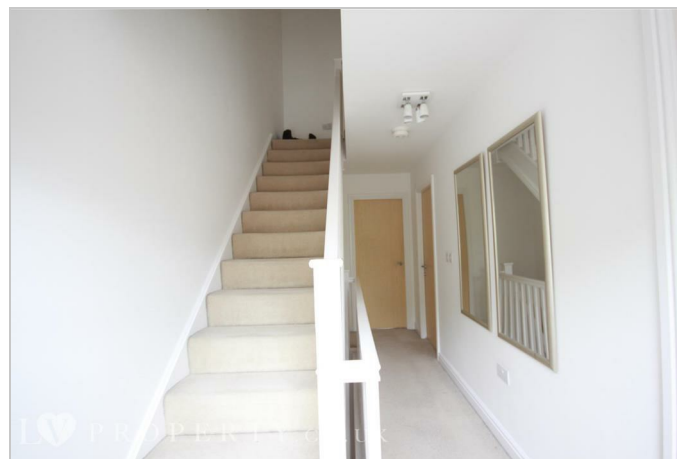


Viewing

Please contact our LV PROPERTY Office on 01212857575 if you wish to arrange a viewing appointment for this property or require further information.

- Three Bedroom End Terrace House
- Two Allocated Car Parking Spaces
- Ideal Location
- Three Bathrooms
- Front & Rear Garden
- Great City Links

LV PROPERTY are proud to present this beautiful three story end terrace house just a short distance from the Jewellery Quarter, the property also benefits from a small front garden and large rear garden, with patio area and two allocated car parking spaces. The ground floor of the house comprises of a separate kitchen with integrated appliances. (Cooker, fridge/freezer and wash machine), it also has a W/C and a large living room with double doors leading into the Garden. The first floor includes a double bedroom, a family bathroom with a bath and also the third bedroom. The second floor is the master bedroom with en-suite and also built in storage cupboard. The property has great links to the city centre, in a very much family area, a viewing is highly recommended, would make a great investment or first time home.



These particulars, whilst believed to be accurate are set out as a general outline only for guidance and do not constitute any part of an offer or contract. Intending purchasers should not rely on them as statements of representation of fact, but must satisfy themselves by inspection or otherwise as to their accuracy. No person in this firm's employment has the authority to make or give any representation or warranty in respect of the property.



0121 285 7575
www.lvproperty.co.uk

157c Warstone Lane, Jewellery Quarter,
Birmingham, West Midlands, B18 6NZ